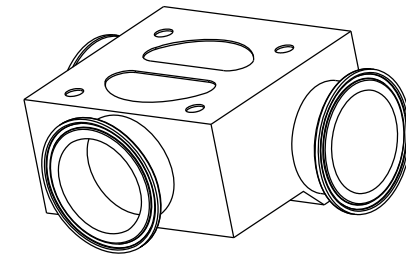
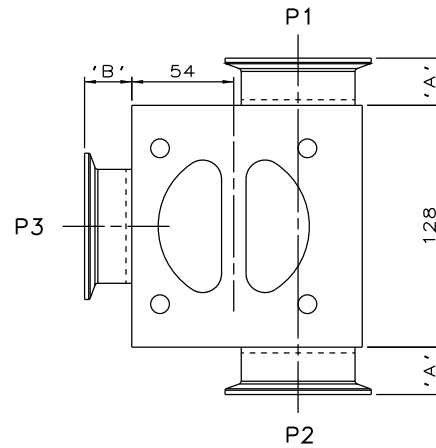
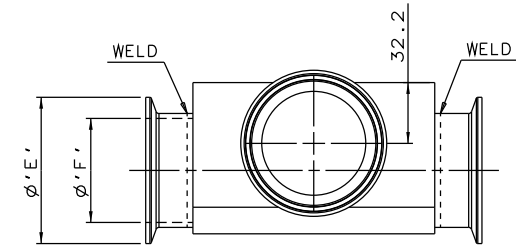
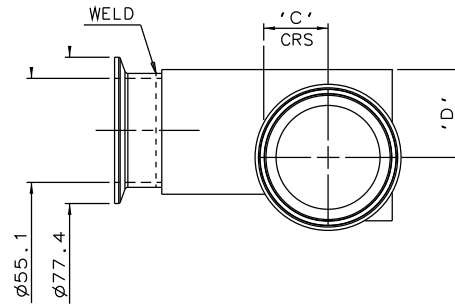


DN65 TO DN100
MAINLINE ONLY



DN50 MAINLINE ONLY

The information on this sheet is Private and Confidential and is the property of Crane Process Flow Technologies Limited and must not be published directly or indirectly in any manner whatsoever without the written permission of the Company and must not be used in any way detrimental to their interests.
© Crane Process Flow Technologies

CRANE Process Flow Technologies
A Crane Co. Company

Saunders
The Science Inside

Title
SCHEDULE OF LEADING DIMENSIONS FOR DN50
WEIR 'T' BODY COMPLETE WITH :
MAINLINE : HYGIENIC CLAMP ENDS WITH ISO 1127 S1 BORE
BRANCH : DN50 HYGIENIC CLAMP END WITH ISO 1127 S1 BORE

Drawn R1 Date 07.02.12

Checked RND Date 23.03.12

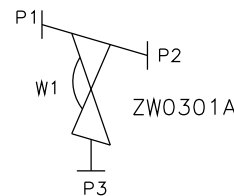
First Angle Projection Method E

DO NOT SCALE

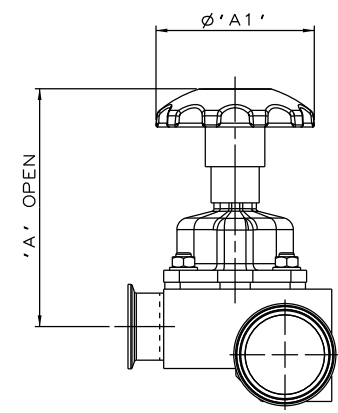
UNCONTROLLED IN HARD COPY FORMAT

Drawing No. WEB-126 Issue. 1

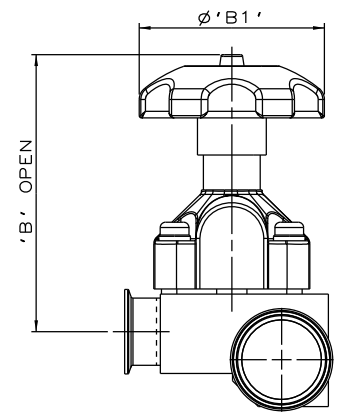
MAINLINE SIZE	A	B	C	D	ϕE	ϕF	BODY WEIGHT
mm	mm	mm	mm	mm	mm	mm	Kgs
DN50	25.0	25.0	34.1	46.5	77.4	55.1	5.6
DN65	50.0	25.0	42.0	55.0	90.9	70.9	5.9
DN80	50.0	25.0	48.4	60.0	105.9	83.7	6.1
DN100	50.0	25.0	61.1	70.0	130.0	109.1	7.3



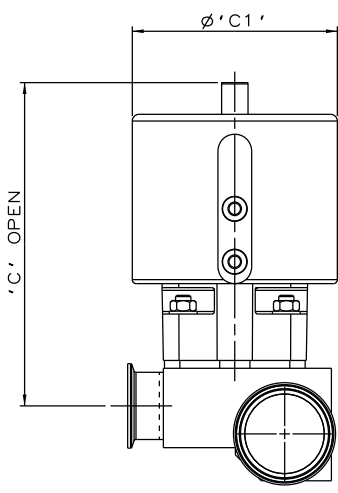
ORIENTATION AS PER
P&ID DIAGRAM FOR
OPTIMUM DRAINABILITY.



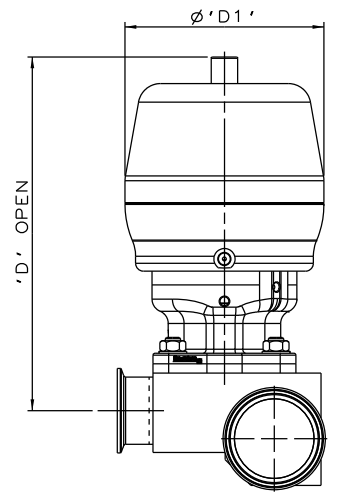
SS NON SEALED BONNET ASSEMBLY



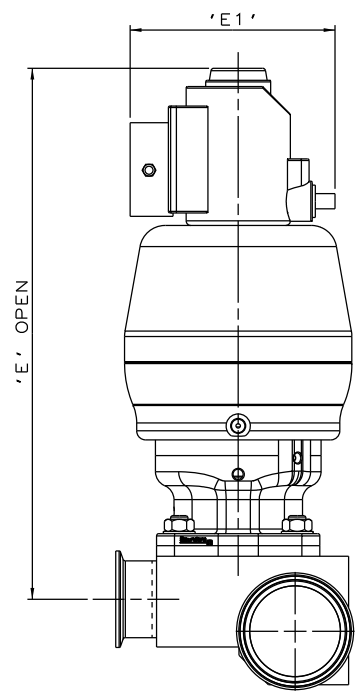
PES BONNET ASSEMBLY



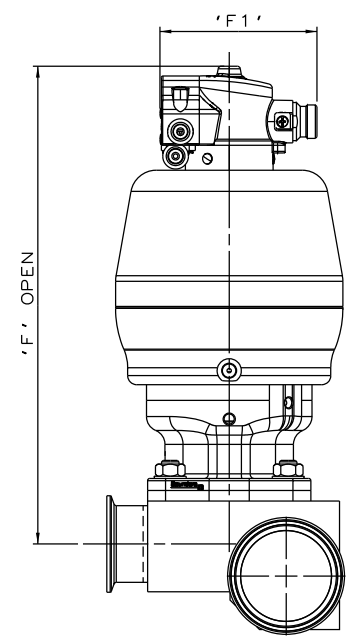
EC ACTUATOR (ALL MODES)



*S360 ACTUATOR



*S360 ACTUATOR WITH I-VUE SENSOR



*S360 ACTUATOR WITH M-VUE SENSOR

The information on this sheet is Private and Confidential and is the property of Crane Process Flow Technologies Limited and must not be published directly or indirectly in any manner whatsoever without the written permission of the Company and must not be used in any way detrimental to their interests.
 © Crane Process Flow Technologies

CRANE	Process Flow Technologies A Crane Co. Company	Saunders The Science Inside
--------------	--------------------------------------------------	---------------------------------------

Title
 SCHEDULE OF LEADING DIMENSIONS FOR DN50/2.00 WEIR 'T' BODY WITH HYGIENIC CLAMP ENDS WITH ISO 1127 S1 BORE. FITTED WITH TOPWORKS OPTIONS

Drawn JRD	Date 15.09.16	UNCONTROLLED IN HARD COPY FORMAT
Checked RND	Date 15.09.16	

First Angle Projection Method E	DO NOT SCALE	Drawing No. WEB-126-ASSY	Issue. 1
---------------------------------	--------------	--------------------------	----------

*DIMENSIONS SHOW MAXIMUM ENVELOPE FOR ALL MODES

BRANCH SIZE	A		A1		B		B1		C		C1		D		D1		E		E1		F		F1		
mm	inch	mm	inch	mm	inch	mm	inch	mm	inch	mm	inch	mm	inch	mm	inch	mm	inch	mm	inch	mm	inch	mm	inch	mm	inch
DN50	2.00	184.2	7.25	120.0	4.72	213.2	8.39	140.0	5.51	248.2	9.77	155.0	6.10	271.2	10.68	150.0	5.92	355.2	13.98	136.0	5.35	319.2	12.57	103.8	4.09